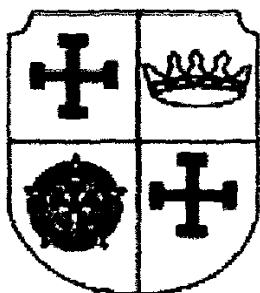


# WHITTLE-LE-WOODS PARISH COUNCIL



Ms Lisa Burton  
Clerk to the Council  
309 Browndge Rd,  
Bamber Bridge,  
PR5 6UU

Tel: 01772 304841  
[www.whittlelewoodsparishcouncil.org.uk](http://www.whittlelewoodsparishcouncil.org.uk)  
[clerk@whittlelewoodsparishcouncil.org.uk](mailto:clerk@whittlelewoodsparishcouncil.org.uk)

Highways District Lead

Lancashire County Council  
(Via email)

17<sup>th</sup> October 2021

Dear Mr Steed

Whittle-Le-Woods Parish Council have been aware of parking issues around the Co-op Supermarket on Chorley Old Road and the junction of Chorley Old Road and Mill Lane for some time.

The issues identified have been discussed at length with PCSO Cath Flett of Lancashire Police and together some improvements are proposed that could help alleviate the issues without moving the problems to other areas in the vicinity.

The main problem is vehicles parking directly outside the Co-op, on the footpath, rather than using the carpark provided.

This also means that pedestrians cannot use this section of footpath.

Parking in this way constricts the road at this point, where there are also 2 bus stops in close proximity.

Parking here also obstructs the vision of vehicles attempting to turn right out of the carpark.

The parked vehicles also cause an obstruction approaching Mill Bridge where the road narrows.

The short-term solution suggested by the Police is to place rectangular flower tubs along this section of footpath to discourage vehicles from parking here.

The Parish Council are willing to fund the flower tubs and therefore request the approval of Lancashire County Council to place flower tubs along this section of footpath.

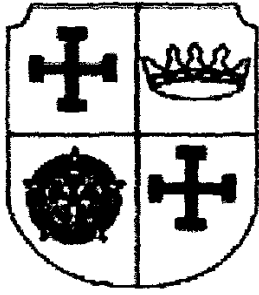
The Police also suggest that Lancashire County Council mark Mill Lane junction with double yellow lines to ensure vehicles do not continue to park in this wide junction area, causing an obstruction onto Chorley Old Road.

A longer-term solution offered is to remove the section of footpath directly outside the Co-op entrance and create a layby parking facility for up to 4 vehicles.

This would remove the obstruction to both Chorley Old Road and to the vehicles exiting the carpark, it would also reduce the pinch point when buses and larger vehicles are travelling down Chorley Old Road.

There is an adequate pavement area outside the Co-op to allow pedestrians to walk along this section of the road.

# WHITTLE-LE-WOODS PARISH COUNCIL



Ms Lisa Burton  
Clerk to the Council  
309 Browndge Rd,  
Bamber Bridge,  
PR5 6UU  
Tel: 01772 304841  
[www.whittlewoodsparishcouncil.org.uk](http://www.whittlewoodsparishcouncil.org.uk)  
[clerk@whittlewoodsparishcouncil.org.uk](mailto:clerk@whittlewoodsparishcouncil.org.uk)

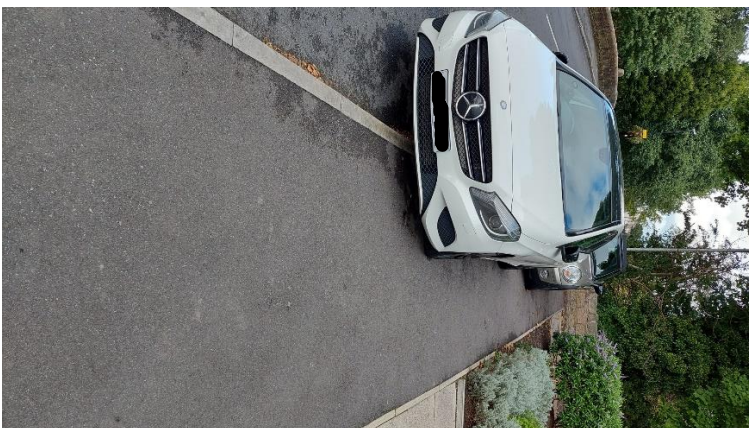
The photos below show the issues:



Parking outside the Co-op, on the footpath, and vehicles parked close to the junction with Mill Lane

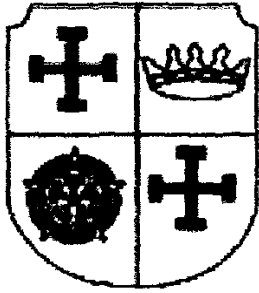


Vehicle attempting to turn right out of the Co-op Carpark



Vehicles parked on footpath outside the Co-op

# WHITTLE-LE-WOODS PARISH COUNCIL



Ms Lisa Burton  
Clerk to the Council  
309 Browndge Rd,  
Bamber Bridge,  
PR5 6UU  
Tel: 01772 304841  
[www.whittlewoodsparishcouncil.org.uk](http://www.whittlewoodsparishcouncil.org.uk)  
[clerk@whittlewoodsparishcouncil.org.uk](mailto:clerk@whittlewoodsparishcouncil.org.uk)

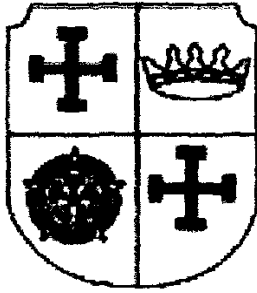


Bin placed on edge of footpath to discourage parking. It is along this section of footpath that flower tubs could be placed.



Mill Lane junction. It is suggested double yellow lines on this section of the junction to ensure vehicles do not park on the corner.

## WHITTLE-LE-WOODS PARISH COUNCIL



Ms Lisa Burton  
Clerk to the Council  
309 Browndge Rd,  
Bamber Bridge,  
PR5 6UU

Tel: 01772 304841

[www.whittlewoodsparishcouncil.org.uk](http://www.whittlewoodsparishcouncil.org.uk)  
[clerk@whittlewoodsparishcouncil.org.uk](mailto:clerk@whittlewoodsparishcouncil.org.uk)

I look forward to hearing from you with respect to the solutions offered to the issues identified above.

1. Placement of rectangular flow tubs along the pavement outside the Co-op
2. Double yellow lines on the junction of Mill Lane / Chorley Old Road
3. Removing the footpath along this section of highway and replacing with a layby for parking / providing better access into the carpark.

Yours sincerely



Lisa Burton

Clerk and Responsible Finance Officer for Whittle-Le-Woods Parish Council